

## Goodmayes Road Ilford, IG3 9UH

Edward Chase is delighted to present to the residential lettings market this brand new one-bedroom ultra-modern apartment located on the doorstep of Goodmayes Station (Overground). This build has been completed in conjunction with the 2018 Cross Rail transportation link making this apartment ideal for professional couples or singles searching for size, comfort and luxury. This property has many key features such as: - Gas central heating - Double glazed windows - Part furnished - Integrated appliances - Dishwasher - Digital thermostat - Combination heating system - Entry phone system - Spacious bedroom - Open plan reception - Fully tiled bathroom - Storage - Balcony Access To view apartment, please contact Edward Chase today.

- One Bedroom Luxury Apartment
- Brand New
- Great Location
- Combination Gas Heating System
- Furnished
- Goodmayes Station Doorstep
- Tiled Bathroom
- White Goods

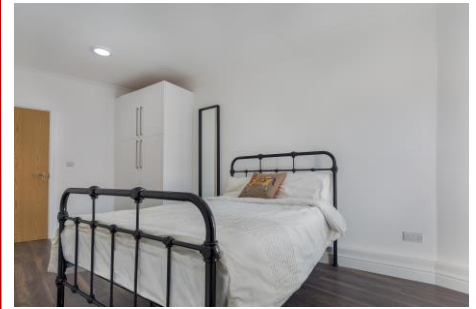
**Monthly Rental Of £1,099**

# Goodmayes Road

## Ilford, IG3 9UH

Monthly Rental Of £1,099

Edward Chase is delighted to present to the residential lettings market this brand new one-bedroom ultra-modern apartment located on the doorstep of Goodmayes Station (Overground). This build has been completed in conjunction with the 2018 Cross Rail transportation link making this apartment ideal for professional couples or singles searching for size, comfort and luxury. This property has many key features such as: - Gas central heating - Double glazed windows - Part furnished - Integrated appliances - Dishwasher - Digital thermostat - Combination heating system - Entry phone system - Spacious bedroom - Open plan reception - Fully tiled bathroom - Storage - Balcony Access To view apartment, please contact Edward Chase today.



### MONEY LAUNDERING REGULATIONS 2003

Intending purchasers will be asked to produce identification and proof of financial status when an offer is received. We would ask for your co-operation in order that there will be no delay in agreeing the sale.

